

ODISHA: Similipal Landscape

Odisha, on the eastern coast of India, is a state rich in mineral resources and culture. The Green-Ag project is being implemented in Similipal Landscape of Mayurbhanj District in Odisha which has around 1,650 villages, covering 556,900 ha including the UNESCO recognized Similipal Biosphere Reserve. The landscape falls entirely within the Mayurbhanj district and consists of the Similipal Tiger Reserve, Similipal Wildlife Sanctuary and Satkosia Reserve Forests.

The landscape represents diverse tropical forests of India and the Similipal Protected Area is one of the most intact forest complexes in the country. It also hosts a diversity of wildlife such as the Royal Bengal Tiger (*Panthera tigris*) and the Asian elephant (*Elephas maximus*). **Similipal is the only home of the unique melanistic tiger (black tiger)**. Similipal forests are rich in flora and fauna with 94 species of orchids: two of which are endemic and 1286 species of flowering plants. The region also has notable diversity of indigenous rice varieties (e.g., *Rupapatia*, *Kantakarpura*, etc.)



Mayurbhanj District is one of the tribal dominated districts of Orissa, with 56.6% of the population comprising of ethnic groups, such as Birhors, Hill Khadias, Santhal, Kolha, etc. who are largely dependent on forests for their livelihoods. Given the ethnic diversity, Similipal is also an area of great repository of indigenous knowledge pertinent to conservation of biodiversity, ethno botanical study and traditional ecological knowledge.

Key Issues and Threats in the Landscape

- Loss of agricultural biodiversity, viz. local 'indigenous' varieties, especially of rice, are being replaced by high yielding varieties.
- Deforestation due to human-induced activities like conversion of forestland for agriculture, construction of dams and mining activities, forest fire and illegal logging.
- Unsustainable collection of non-timber forest product (NTFP).
- Grazing by livestock in the protected area of Similipal Tiger Reserve has the potential to spread communicable livestock diseases to wildlife.

- Illegal logging of trees for timber and firewood and excess harvesting of medical plants resulting in loss of forest natural resources.
- Increasing human wildlife conflict, especially between elephants and local communities.

Green-Ag project, Odisha

Green-Ag project in Odisha will work towards catalyzing transformative change in agricultural sector of Similipal Biosphere Reserve and will address the key issues and threats by:

- managing human-biodiversity interface
- agro-ecological intensification
- sustainable land management through landscape approach and
- reducing pressures on high-conservation-value forests by addressing the drivers of deforestation.

Project Implementation, Similipal Landscape

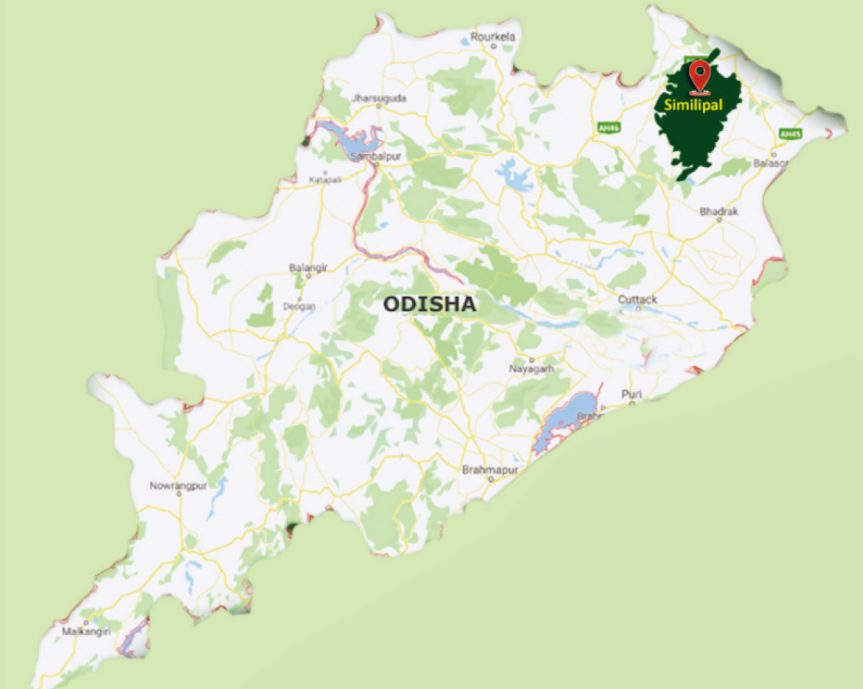
In Odisha, the project is being implemented by the Directorate of Soil Conservation and Watershed Development and Institute on Management of Agricultural Extension (IMAGE), Department of Agriculture & Farmers' Empowerment is the Operational Partner. To carry out the project interventions, at the state level, a State Project Management Unit (SPMU) and at the district level, a Green Landscape Implementation Unit (GLIU) have been established with sectoral experts. The SPMU works in close coordination with the National Project Management Unit (NPMU) located at FAO for effective implementation of the project components and coordinates all monitoring and reporting tasks at the landscape level.



For Information:

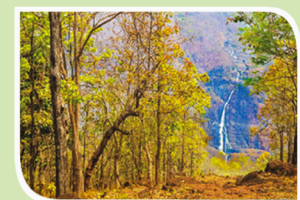
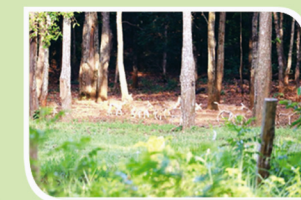
Project website: [https://greenag\(dot\)nmsa\(dot\)gov\(dot\)in/](https://greenag(dot)nmsa(dot)gov(dot)in/)

- NPMU:** Project Director (Green-Ag), C-293, Block C, Defence Colony, New Delhi-110024, Phone: +91 11-24652201, email: [greenag-india\(at\)fao\(dot\)org](mailto:greenag-india(at)fao(dot)org)
- SPMU:** Odisha Watershed Development (OWDM) Mission Building, Near OUAT, Siripur, Bhubaneswar, Odisha - 751003, Phone: 0674-2397522 (SPMU, Odisha), email: [spmu\(dot\)gap\(dot\)od\(at\)gmail\(dot\)com](mailto:spmu(dot)gap(dot)od(at)gmail(dot)com)
- GLIU:** House no. 399/1985 Mouza, At - Khetra Patna, Murgabadi, Via - Baripada, Post - Bhanjpur - 757002, District - Mayurbhanj, 06792-295083 (GLIU, Odisha), email: [GLIU\(dot\)GAP\(dot\)OD\(at\)gmail\(dot\)com](mailto:GLIU(dot)GAP(dot)OD(at)gmail(dot)com)



Green-Ag Project, Odisha

"Transforming Indian Agriculture for Global Environmental Benefits and the Conservation of Critical Biodiversity and Forest Landscapes"



Green-Ag Project, Odisha

Background

The Project “Green-Ag: Transforming Indian Agriculture for Global Environmental Benefits and the Conservation of Critical Biodiversity and Forest Landscapes” is funded by the Global Environment Facility (GEF). The Ministry of Environment, Forest and Climate Change (MoEF&CC), Government of India (GoI) is the GEF Operational Focal Point and the Department of Agriculture and Farmers’ Welfare (DA&FW), Ministry of Agriculture and Farmers’ Welfare, GoI is the National Executing Agency. The Food and Agriculture Organization of the United Nations (FAO) is implementing agency.

The project is implemented in five states of India: i) Madhya Pradesh, ii) Mizoram, iii) Odisha, iv) Rajasthan and v) Uttarakhand. The project landscapes are a mix of conservation and production areas.

In Odisha, the project is implemented in Similipal Landscape covering 1650 villages of Mayurbhanj District.

Project Objective

To catalyse transformative change of India’s agricultural sector to support achievement of national and Global Environmental Benefits (GEBs) and conservation of critical biodiversity and forest landscapes.



Project Approach

Adoption of intensive agricultural practices are reducing ecosystem services across India and resulting in loss of agricultural biodiversity. Additionally, overgrazing by livestock is reducing available habitat for wild species and increasing the rates of desertification and land degradation.

Green-Ag project primarily seeks to harmonize the priorities and investments between India’s agricultural and environmental sectors to achieve Global Environmental Benefits (GEBs) under four GEF focal areas – Biodiversity (BD), Land Degradation (LD), Climate Change Mitigation (CCM) and Sustainable Forest Management (SFM).

The project adopts a “**bottom-up approach**” or “**grassroots to policy**” approach in its implementation.

- ◆ **At the field level**, the project’s major thrust areas are promotion of:
 - agroecological approaches
 - sustainable land management practices
 - alternative climate-resilient livelihood options
- ◆ **At the policy and programme level**, Green-Ag project will:
 - establish multi-sectoral committees at District, State and National levels that would aid in planning, implementation and monitoring of project activities
 - facilitate dialogue and convergence between different departments and relevant stakeholders, including communities

The project is innovative in its approach as it seeks to adopt multi-sectoral approaches, innovative tools and approaches to landscape management, which is embedded in the project design and builds on existing institutional arrangements in the landscape.



FACT FILE

- ✓ **GEF Project Grant (Total):** USD 33.5 million (Odisha - 7.91 million)
- ✓ **Co-Financing (Total):** USD 868 million (Odisha- 131.16 million)
- ✓ **Total Project Funding:** USD 902 million (Odisha- 139.07 million)
- ✓ **Duration:** 2019 to 2026
- ✓ **Project Location:** Madhya Pradesh, Mizoram, Odisha, Rajasthan and Uttarakhand
- ✓ **Operational Area in Odisha:** Similipal Landscape around Similipal Biosphere Reserve in Mayurbhanj District covering 556,900 ha area.

Project Partners (Government counterparts):

- ✓ **National Executing Agency:** Department of Agriculture & Farmers’ Welfare (DA&FW), Ministry of Agriculture and Farmers’ Welfare (MoA&FW), Govt. of India.
- ✓ **GEF Operational Focal Point for India:** Ministry of Environment, Forest and Climate Change (MoEF&CC), Govt. of India
- ✓ **Project Implementing Agency:** Food and Agriculture Organization of the United Nations (FAO)

State Agencies, Odisha

- ✓ **State Operational Partner:** Institute on Management of Agricultural Extension (IMAGE), Govt. of Odisha
- ✓ **State Nodal Department:** Department of Agriculture & Farmers’ Empowerment, Govt. of Odisha
- ✓ **State Implementing Agency:** Directorate of Soil Conservation & Watershed Development, Govt. of Odisha

